

# DESKTOP FIBER LASER MARKING MACHINE BML-FT



World brand



3 Years warranty



Honors



Multi-language  
service



# Machine Details

**NO.1** STREAMLINED DESIGN



**NO.2** FIELD LENS

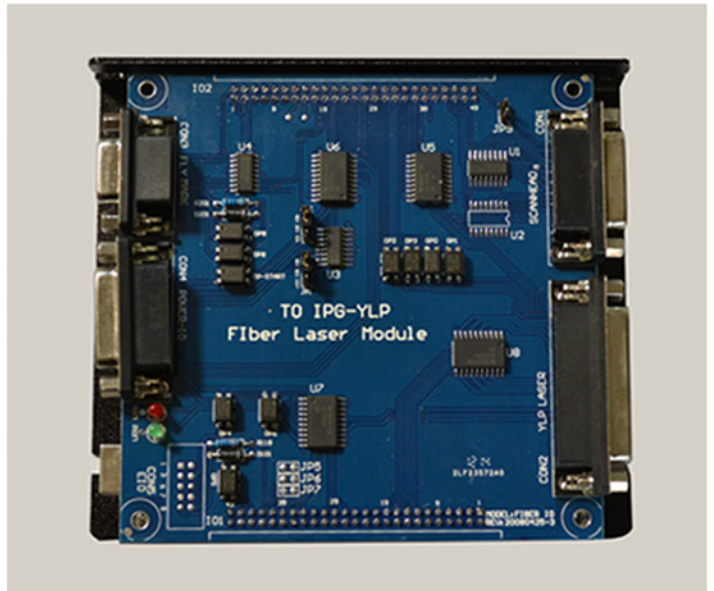


**NO.3** SCANNING GALVANOMETER



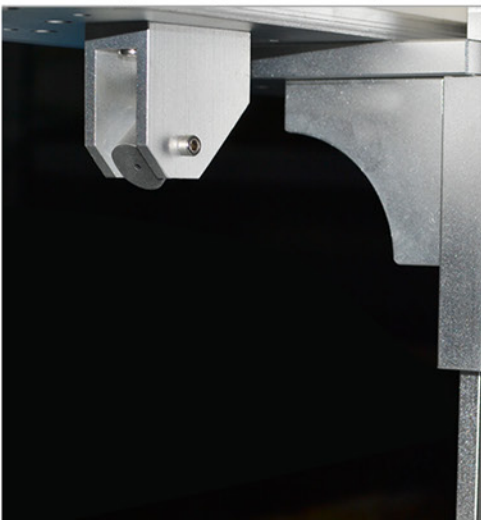
**NO.4** CONTROL CARD

Professional control system



**NO.5** EASY-FOCUSING DEVICE

Easy-focusing device, Bodor's patented design



**NO.6** SCALEPLATE

High-precision scale indicator



**NO.7** FIBER LASER GENERATOR

More than 10000 hours life time



# SIDE PHOTO SHOW



## Option



Fiber laser protective goggles



Rotary device



## MAIN FEATURES 5 BEST ADVANTAGES

**1**

High quality laser beam.  
Fine marking!

The diameter of focal spot is  
not over 20 um

**3**

Low consumption.

About 0.5kw for whole machine

**5**

3 years warranty !

**2**

High speed marking.

Special laser head for high-speed  
scanning

**4**

long lifetime.

More than 10000 hours life  
for the laser

# DESKTOP FIBER LASER MARKING MACHINE BML-FT SERIES

## MACHINE PARAMETER

Model	BML20FT	BML30FT
Marking Range	100*100mm ( Option: 200*200mm 300*300mm )	
Laser Power	20w/30w	
Frequency	20KHz~80KHz	
laser Wavelength	1064nm	
Minimum Line Width	0.02mm	
Minimum Character	0.15mm	
Engraving Line Speed	≤ 7000mm/s	
Repeatability Accuracy	±0.001mm	
Graphic Format Supprted	bmp . jpg . gif . tga . png . tif . ai . dxf . dst . plt .etc.	
Unit Power	< 0.5kw	
Laser Module Life	> 100000 hours	

## Application

### Applicable Industries:

Mobile phone keypad, plastic translucent keys, electronic components, integrated circuits (IC), electrical appliances, communication products, sanitary ware, tools, accessories, knives, eyeglasses and clocks, jewelry, auto parts, luggage buckle, cooking utensils, stainless steel products and other industries.

### Applicable Materials:

Metals (including rare metals), engineering plastics, electroplating materials, coating materials,coating materials, plastics, rubber, epoxy resin, ceramic, plastic, ABS, PVC, PES, steel, titanium, copper and other materials.

